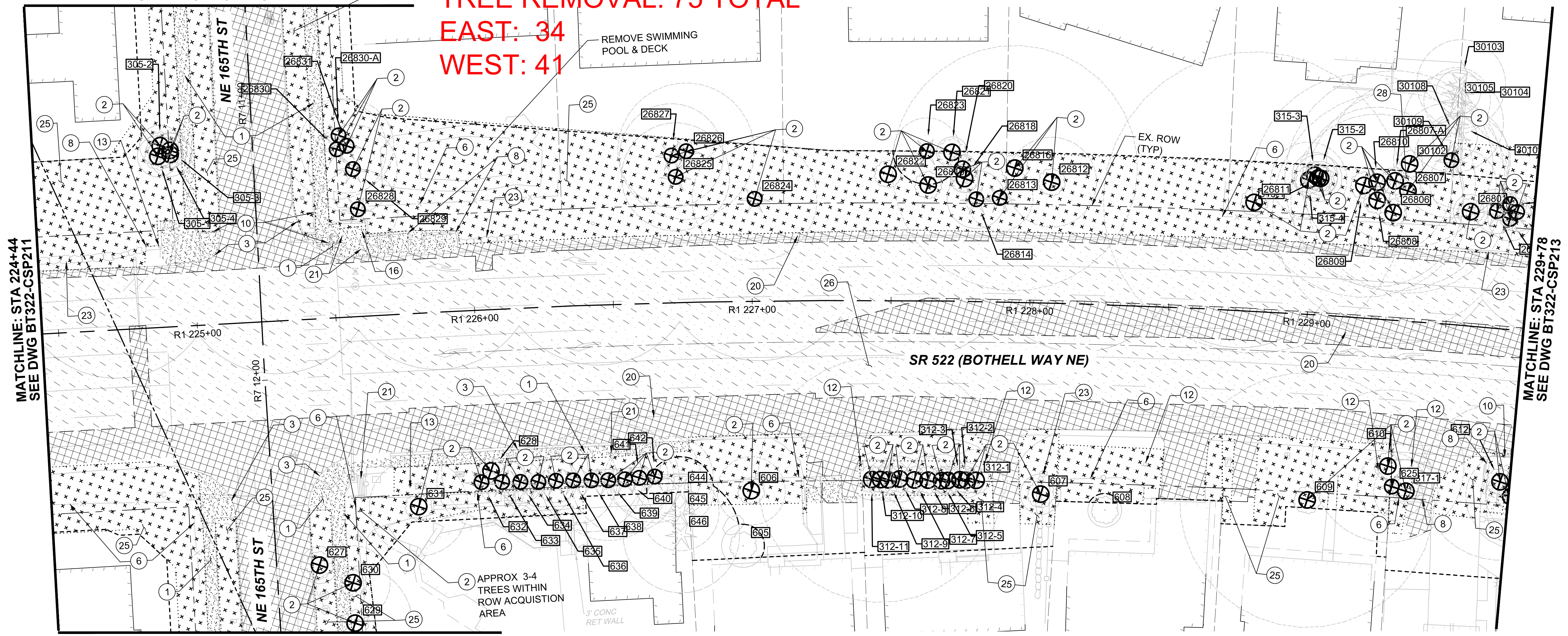


Xrefs:
 xS3-BT522-CAP301
 xS3-BT522-VRX101
 xS3-BT522-CSN301
 xS3-BT522-CSP301
 xS3-BT522-RPP301
 xBRT-CUD06-TB22x34
 xS3-BT522-GZK101
 GB-SEAL-RWCH4721
 xS3-BT522-LXP101
 xS3-BT522-VSF100
 xS3-BT522-CSP302
 xS3-BT522-CSN101

MATCHLINE: R7 STA 10+65
 SEE DWG BT322-CSP224

TREE REMOVAL: 75 TOTAL
EAST: 34
WEST: 41



MATCHLINE: STA 224+44
 SEE DWG BT322-CSP211

MATCHLINE: STA 229+78
 SEE DWG BT322-CSP213

MATCHLINE: R7 STA 12+91
 SEE DWG BT322-CSP225

GENERAL NOTES:

- SEE DRAWINGS BT320-UCP201 TO BT324-UCP220 FOR UTILITY RELOCATION OR REMOVALS.
- SEE DRAWINGS BT320-CDP202 TO BT322-CDP225 FOR DRAINAGE RELOCATION OR REMOVALS.
- SEE DRAWINGS BT320-CP201 TO BT322-CP228 FOR PAVING PLANS.
- SEE DRAWINGS BT320-CRY201 TO BT320-CRY213 FOR TYPICAL SECTIONS.
- WORK WITHIN THE TPZ'S OF PROTECTED TREES SHALL BE PERFORMED IN ACCORDANCE WITH TREE PROTECTION SPECIFICATIONS.
- SEE DRAWINGS BT320-TSD201 TO BT320-TSD207 FOR SIGNAL RELOCATION OR REMOVALS.
- SEE DRAWINGS BT310-CSP101 TO BT312-CSP127 FOR REMOVALS IN SHORELINE PACKAGE.
- ALL TREES NOT SPECIFIED FOR REMOVAL SHALL BE PROTECTED IN PLACE.

CONSTRUCTION NOTES:

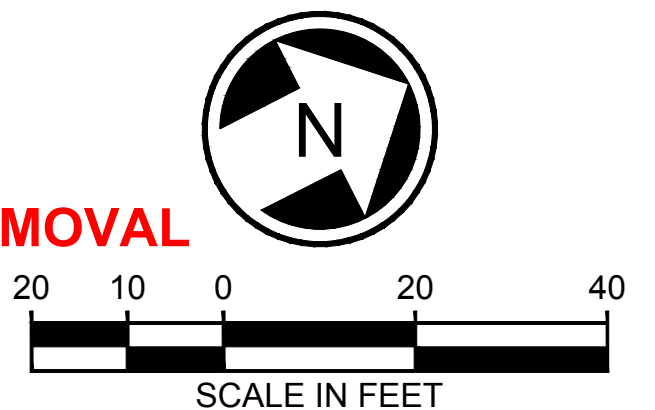
- REMOVE EXISTING CEMENT CONCRETE SIDEWALK
- REMOVE EXISTING TREE
- REMOVE EXISTING CURB AND GUTTER
- REMOVE EXISTING TRAFFIC SIGN AND FOUNDATION
- PROTECT IN PLACE, FEATURE TO REMAIN
- REMOVE EXISTING FENCE, POST, AND FOUNDATION
- REMOVE EXISTING WHEEL STOP
- REMOVE EXISTING WALL
- REMOVE EXISTING STRUCTURE
- REMOVE EXISTING CONCRETE CURB
- REMOVE EXISTING MOUNTABLE CURB
- REMOVE AND REPLACE MAILBOX. SEE PAVING PLANS FOR FINAL LOCATION.
- REMOVE EXISTING BILLBOARD SIGN AND FOUNDATION
- REMOVE BOLLARDS
- REMOVE BIKE RACK
- REMOVE FOUNDATION OF EXISTING BUS SHELTER, AND/OR BENCH.
- REMOVE EXISTING CONCRETE BARRIER
- REMOVE EXISTING GUARDRAIL
- REMOVE GATE
- REMOVE EXISTING ASPHALT PAVEMENT
- REMOVE EXISTING BUS SHELTER, BENCH, SIGN, POST, AND/OR TRASH RECEPTACLE BY OTHERS
- REMOVE EXISTING CONCRETE STAIRS
- REMOVE EXISTING ROCKERY
- (NOT USED)
- CLEAR AND GRUB EXISTING VEGETATION
- HMA GRIND PER TYPICAL SECTIONS

LEGEND:

- CONIFER
- DECIDUOUS
- SIGNIFICANT TREE
- NON-SIGNIFICANT TREE
- TREE PROTECTION ZONE (TPZ)
- TREE PROTECTION FENCING
- TREE REMOVAL
- TREE TAG NUMBER

KEY TO CODINGS:

- THE AREAS FILLED WITH PLUS SIGN PATTERNING INDICATE CLEAR & GRUB
- THE AREAS FILLED WITH CROSS-HATCH PATTERNING INDICATE ASPHALT REMOVAL
- THE BOLD CIRCLES WITH X'S IN THEM INDICATE TREE REMOVAL



08/09/22 | 2:34 PM | NGUYEN
 C:\PWORKING\JACOBS_BRI\VEG_NGUYEN\0403112\SS-BT322-CSP211-220.DWG

60% SUBMITTAL

NOT FOR CONSTRUCTION

DESIGNED BY:
D. TORREY
 DRAWN BY:
O. NGUYEN
 CHECKED BY:
K. THOMAS
 APPROVED BY:
L. OLSEN



Jacobs

STRIDE
 BRT General Engineering Consultant



SUBMITTED BY:
P. AVADUTHA

DATE:
08/26/2022

REVIEWED BY:
K. LEOTTA

DATE:

PACKAGE # ---
 SCALE:
1"=20"
 FILENAME:
S3-BT322-CSP211-220
 CONTRACT No.:
RTA/LR OA 0206-19
 DATE:
08/26/2022

SR 522 / NE 145TH BRT
SR 522 (BOTHELL WAY NE)
 CUD6
 CIVIL
 SITE PREPARATION PLAN
 STA 224+44 TO STA 229+78

DRAWING No.:
BT322-CSP212
 FACILITY ID:
BT322
 SHEET No.:
--- REV:
