

# LAKE FOREST PARK 60% ALIGNMENT OVERLAY

Price Tag: \$651 Million / 40% in LFP: \$250 Million

This alignment overlays the 60% landscape plans on SR522/145 BRT LFP

There is little to no landscape or sound buffer on the west side of Bothell Way, only tall, bare, concrete walls along the west side of the alignment, from 38<sup>th</sup>- 41<sup>st</sup>

490 Trees and over 500 Shrubs are Removed.

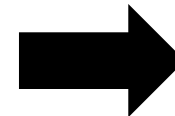
THE NOISE IMPACTS BOTH SIDES OF BOTHELL WAY

90,000 Cubic Yards of Material is to be Hauled In and Out of LFP  
Requiring 91 Dump Trucks per Week for 1 Year

THESE TREES ARE GONE

Transit Time Savings is 2.3  
Minutes with this Build

These barren WSDOT Retaining Walls remove 229 trees and countless shrubs on the west side of Bothell Way. It runs from 38<sup>th</sup> - 41<sup>st</sup>, nearly the length of the alignment. A black chain link fence is provided for WSDOT worker safety, requiring a permanent easement at the back of private properties, creating security issues.



North

These Walls Extend the Length of 11 Football Fields  
There is No Landscaping, Only a Black Chain Link Fence

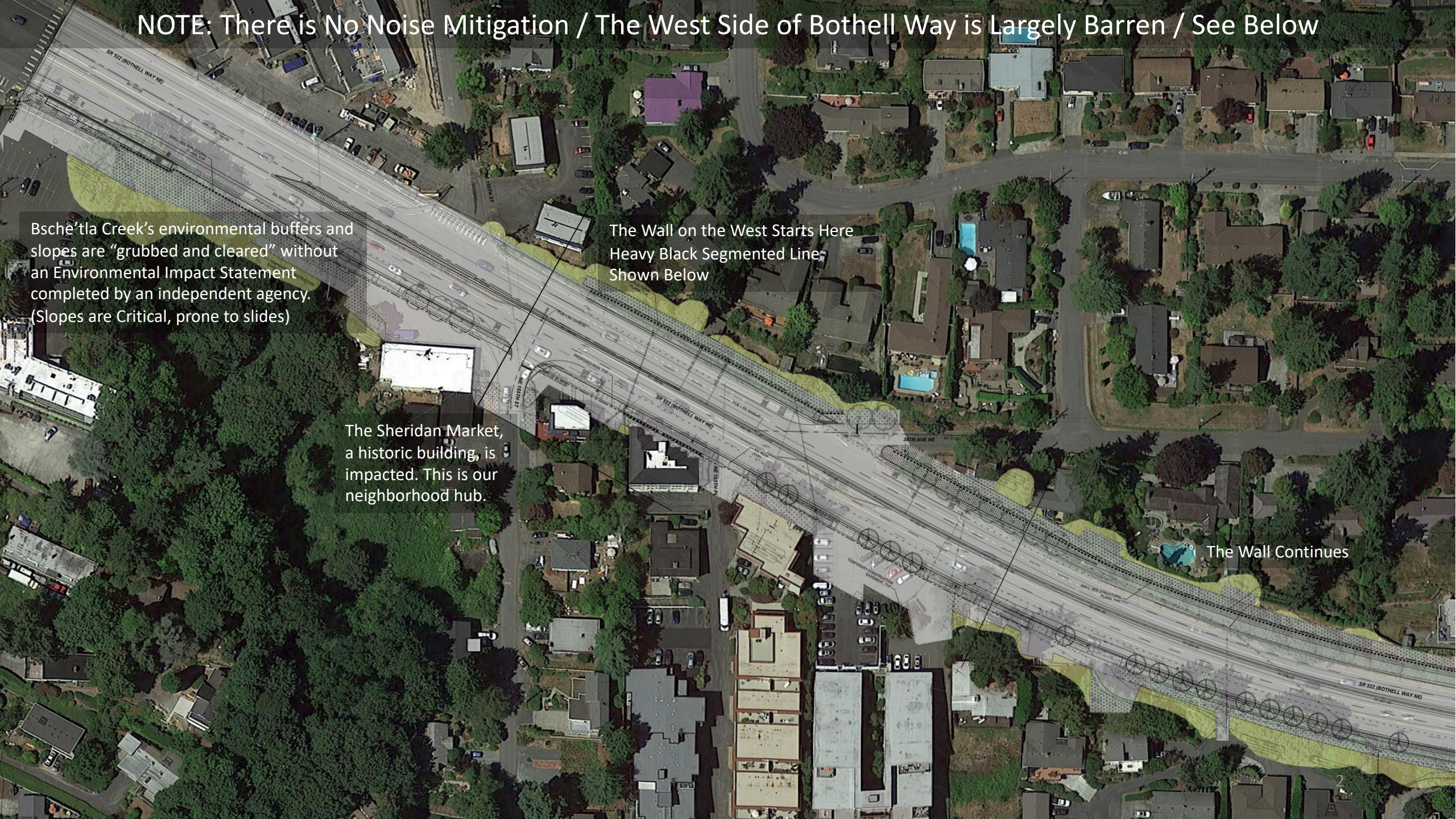
NOTE: There is No Noise Mitigation / The West Side of Bothell Way is Largely Barren / See Below

Bsche'tla Creek's environmental buffers and slopes are "grubbed and cleared" without an Environmental Impact Statement completed by an independent agency. (Slopes are Critical, prone to slides)

The Wall on the West Starts Here Heavy Black Segmented Line Shown Below

The Sheridan Market, a historic building, is impacted. This is our neighborhood hub.

The Wall Continues



**NOTE: There is No Noise Mitigation / The West Side of Bothell Way is Largely Barren / See Below**

On the west side of Bothell Way, from 38<sup>th</sup> to 41<sup>st</sup>, 31 homes have mandated property acquisitions due to the "West Shift." Overall, 101 homes have mandated property acquisitions and this does not include temporary easements on the east side of Bothell Way, where turnaround driveways, a sidewalk and 4'-wide planting strips are planned.

**This Design Is NOT EQUITABLE**

The Wall Continues

The Sound Transit SR522 Noise and Vibration Report omits sampling sound along Bothell Way at the most impacted properties, and it was completed before the "West Shift."

The Wall Continues

**90,000 Cubic Yards of Material is to be Hauled In and Out of LFP  
Requiring 91 Dump Trucks per Week for 1 Year**

City	Total cubic yards of dirt and topsoil removed	Total cubic yards of dirt and top soil moved in	Total cubic yards of dirt and topsoil moved in and out	% by City	# Trucks loads required
Seattle	7,800	640	8,440	6%	444
Shoreline	600	1,600	2,200	2%	116
LFP	56,000	34,000	90,000	64%	4,737
Kenmore	6,000	7,200	13,200	9%	695
Bothell	16,000	10,000	26,000	19%	1,368
<b>Total</b>	<b>86,400</b>	<b>53,440</b>	<b>139,840</b>	<b>100%</b>	<b>7,360</b>
Dump Truck Capacity/ Cubic Yards	19				

The Wall Continues

On the west side of Bothell Way, from 38<sup>th</sup> to 41<sup>st</sup>, 31 homes have mandated property acquisitions due to the "West Shift." Overall, 101 homes have mandated property acquisitions and this does not include temporary easements on the east side of Bothell Way, where turnaround driveways, a sidewalk and 4'-wide planting strips are planned.

This Design Is NOT EQUITABLE



For more info see: [www.lfpcore.org](http://www.lfpcore.org)  
Contact: [info@lfpcore.org](mailto:info@lfpcore.org)

The Sound Transit SR522 Noise and Vibration Report omits sampling sound along Bothell Way at the most impacted properties, and it was completed before the "West Shift."

Turnaround driveways remove 261 trees on the east side of Bothell Way.

The Wall Ends

This image is derived from Sound Transit's Visual and Aesthetics Technical Report. This creates a "Negative High Level Visual Change," shown at 165<sup>th</sup>

